

DISCOVERY®

DISCOVERY®



2016

CLASS A DIESEL



The journey ahead has never looked better.





When life is good, when family and friends come together, when fun times are had by all...Discovery is there, surrounding you with quality and comfort and ensuring you get the most out of every journey. A lifetime of memories awaits you.

Discovery Top Features

- New High-Gloss 12"x 24" Porcelain Floor Tile Pattern
- TV & A/V Electronics
- Polished Solid Surface Countertops
- 84" Interior Ceiling Height
- Power Awning w/LED Light Strip
- Frameless Flush Mount Windows
- Hardwood Cabinets, Face Frames, Doors & Drawers
- Residential Refrigerator
- Updated Sconce Light, Carpet, Valance & Ceiling Plenum design
- F-21 Construction & Manufacturing Technology
- Powerlock System™ w/Interlocking Floors, Walls & Ceiling
- Powerframes™ Precision Welding w/5-Point Build System
- Freightliner® XC-M Chassis - 380 HP & 1150 ft-lb Torque
- Power Bridge® Chassis

OPTIONAL

- Exterior Pull-Out Grill & Kitchenette
- Undercarriage LED Lights
- Electric Fireplace
- Power Water Hose Reel
- Accent Tile Rug Inlay



Autumn Pecan



Celestial Reflection



Times Square

Both inside and out, there is a wide selection of colors, styles and finishes. From the moment you lay your eyes on a Discovery, the high-style graphics and décor collection welcome you with gracious beauty and contemporary design. We've paid attention to every detail. So wherever you are, you'll feel right at home.

AUTUMN PECAN

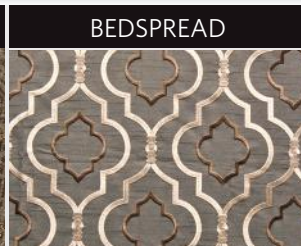
SOFA



ACCENT



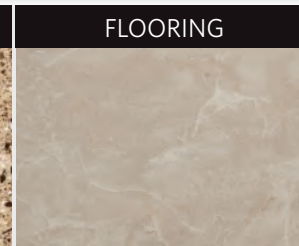
BEDSPREAD



COUNTERTOP



FLOORING



CARPET



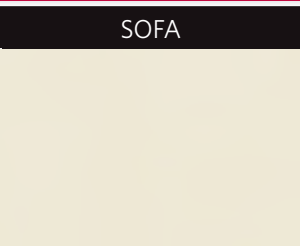
CABINETRY

BARCELONA



CELESTIAL REFLECTION

SOFA



ACCENT



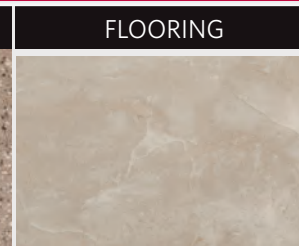
BEDSPREAD



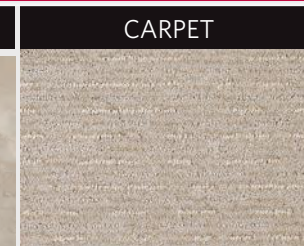
COUNTERTOP



FLOORING



CARPET

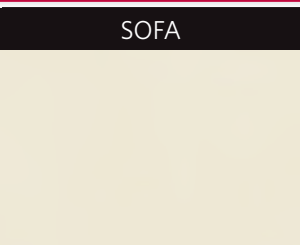


BUTTERNUT

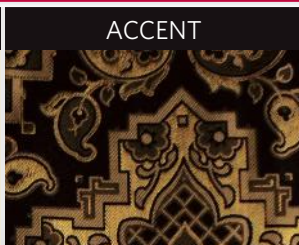


TIMES SQUARE

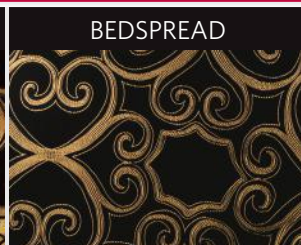
SOFA



ACCENT



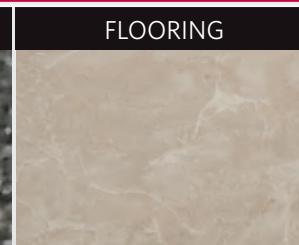
BEDSPREAD



COUNTERTOP



FLOORING



CARPET



INTERIOR THROUGHOUT

- 12"x 24" Porcelain Tile Flooring
- 20,000/25,000 Btu/h Dual Furnaces (37R, 40G)
- 20,000/30,000 Btu/h Dual Furnaces (40X)
- 25,000/34,000 Btu/h Dual Furnaces (40E)
- 84" Interior Ceiling Height
- Auto Generator Start
- Central Vacuum System
- Crown Molding
- Dedicated Full-Length, Metallic A/C Ducting
- Deluxe Roller Bearing, Full-Extension Drawer Guides & Transit-Ship Locks
- Demand Water Pump w/Filter
- Dual Roof-Mounted, High-Efficiency A/C w/Solar Panel, Chill Grills & Bedroom Heat Pump
- Flat Interior Ceiling
- Fan-Tastic® Power Roof Vent w/ Wall Switch
- Hardwood Cherry Cabinet Faceframes Doors & Drawers
- Manual Day/Night Double Roller Shades
- Passenger Armrest w/Integrated Magazine Rack
- Polished Solid Surface Countertop
- Power Passenger Chair w/ Footrest
- Satellite Radio (Subscription Required)
- Stackable Washer & Dryer
- Tuff-Pex™ Plumbing System
- Wall Sconces (Living Area)
- Wall Switches (Includes Switches for Ceiling Lights & Vents)
- Water Heater 16-Gallon Output
- Water Heater Bypass
- Whole-Coach Water Filtration System
- Wood Finish Return Air Intake for Furnace

Optional

- CSA Package (Canadian Specs)**

DRIVER CONVENIENCE

- (2) 12V Power Outlets at Dash
- 110V Power Outlet at Dash & Passenger Area
- 3-Point Seatbelts at Driver & Front Passenger Seats (w/ Adjustable Shoulder Straps)
- Automotive Wrap-Around Dash
- Auxiliary Start Circuit Switch
- Battery Disconnect System
- Cruise Control
- Denso® High-Output Auto A/C Heater Combo
- Driver Left-Console w/Lower Storage Bin
- Dual Dash Monitors
- Easy-Access Battery Disconnect Switch
- Front Power Roller Shades/Blinds
- Manual Driver & Passenger Roller Shades/Blinds
- Power Entry Step Cover
- Radio Switch Main/Auxiliary Power
- Remote Heated Chrome Power Exterior Mirrors w/Turn Signals & Sideview Cameras
- Smart Steering Wheel w/Tilt & Telescoping
- Touch Screen Radio w/Built-In GPS
- USB Charger (Driver Side)
- Villa® Driver Passenger Soft-Touch Captain's Chairs w/ Reclining Back & 6-Way Power Controls

GALLEY

- 22 cu. ft. Residential Refrigerator w/Two Additional Batteries & 2800 watt Inverter
- 3-Burner, High-Output Cooktop w/Sealed Burners
- Adjustable Cabinet Shelves (Select Cabinets)
- Dinette Base Cabinet w/Free-Standing Chairs
- Fan-Tastic® Power Roof Vent w/ Wall Switch
- Flip-Up Counter Extension (37R)
- Galley Faucet w/Pullout Sprayer
- Polished Solid-Surface Countertop w/Sink Covers
- Under-Galley Shelving & Wastebasket
- Window Over Sink (40E, 40G, 40X)

Optional

- 3-Burner, High-Output Cooktop w/Sealed Burners & Oven
- Dishwasher

LIVING ROOM

- 42" LED HDTV (37R, 40G)
- 50" LED HDTV (40X)
- 50" Pop-Up LED TV (40E)
- 5.1 Home Theater System w/Built-in AM/FM/DVD & Surround Sound Speakers
- Swivel-Arm for Main TV (37R)
- TV Antenna w/Signal Booster
- Villa Residential Seat Styling
- Wall-to-Wall High Gloss Porcelain Flooring

Optional

- Desk w/Chair (40G)
- Electric Fireplace (37R)
- Expandable L-Sofa (40X)
- Expandable L-Sofa w/Jack-Knife Sleeper (37R)
- 32" LED HDTV in Front Overhead
- U-Shaped Dinette/Dual FS Recliners (40X)
- U-Shaped Dinette/Sofa (40G, 40X)
- Villa® Booth Facing Dinette (37R, 40G, 40X)

BEDROOM

- Bedspread w/Decorative Pillows
- Coffered Ceiling
- King Exclusive Dream Easy Series w/Adjustable Head Section (40E)
- King Dream Easy Memory Foam Mattress (40G, 40X)
- 32" LED HDTV
- Plush Wall-to-Wall Carpet w/ Carpet Pad in Bedroom
- Queen Dream Easy Memory Foam Mattress (37R)
- Rear Wardrobe w/Cedar Lining, Carpeted Floor & Wire Organizer
- Remote Generator Start Switch
- Slide-Out Features Overhead Cabinets
- Wardrobe Lighting

Optional

- Dresser/Vanity w/Second Sink (40G)
- Dual Wardrobe (37R)
- King Air Mattress (40G, 40X)
- King Bed w/Memory Foam (37R)

BATHROOM

- A/C Venting
- Cabinet Toe Kicks
- Fan-Tastic® Power Roof Vent w/ Wall Switch
- Glass Shower Door
- LED Lighting Over Sink
- Hardwood Bath Door/Trims
- Make-Up Lights (Select Models)
- Molded Grani-Coat Shower Enclosure w/Skylight & Low Threshold
- Porcelain Toilet w/Water Saver
- Porcelain Vacuum Flush Toilet (40E)

SAFETY/CONVENIENCE (INTERIOR)

- 30" Wide Entry Door
- Carbon Monoxide Detector/Alarm
- Central Electrical Panel
- Energy Management System (EMS) w/Soft Start
- Fire Extinguisher
- Multiple Seatbelt Locations
- Neutral Loss Protection
- Propane Detector/Alarm
- Smoke Detector/Alarm

EXTERIOR THROUGHOUT

- 120V/12V AC/DC Converter
- 2,800-Watt Pure Sine Wave Inverter w/Remote
- 4-Point Automatic Levelers
- 50-Amp Service
- 8.0 KW Onan® Quiet Diesel Generator
- Aluminum Bus-Style Side Swing Luggage Doors
- Aluminum Extruded Slide Ramps
- Awning Rail/Drip Molding (Both Sides)
- Full-Body Paint
- Clear Protective Front Mask
- Dryseal™ Edge Coating (Water-Wicking Wall Edge Coating)
- Exterior Entertainment Center w/32" LED HDTV and High Output, Splashproof
- AM/FM/DVD Sound System

EXTERIOR THROUGHOUT (CONTINUED)

- Fiberglass Front/Rear Caps w/ High-Mounted Taillights
- Fiberglass Front Quarter Panels
- Fiberglass Wheel Well Trims
- Five-Point Build System™
- Frameless Flush Mount Windows
- Heat Pump in rear A/C
- Manual Generator Slide
- Molded Fiberglass Roof
- Power Awning w/LED Light Strip & Wind Sensor React
- Rear Ladder
- Rear Rockguard
- Remote Keyless Entry
- Seamless Beltline Trim
- Tapered Slideout Box Tops & Debris Awnings
- Tuff-Roof™ Low-Maintenance Roof System
- Water Pump Switch (Multiple Locations)
- 1st Full Bay 36"/54" Slide Trays (37R, 40G, 40X)
- 1st Full Bay 54" Slide Trays (40E)
- 1st Full Bay 90" Slide Tray (37R, 40G, 40X)
- 2nd Full Bay 54" Slide Trays (40E, 40G, 40X)
- 2nd Full Bay 90" Slide Tray
- 3rd Roof A/C (40G, 40X, 40E)
- DSS Auto-Locating In Motion Satellite Dish
- DSS Auto-Locating Stationary Satellite Dish
- Exterior Pull Out Grill & Kitchenette (37R, 40G, 40X)
- Power Water Hose Reel
- Satellite Dish Wineyard Stationary
- Solar Electric Panel
- Tankless Water Heater
- Undercarriage LED Lights
- Window Awning Package

Optional

AUTOMOTIVE

- Aluminum Wheels
- Color Rear & Side Vision Camera System
- Fog Lamps
- Large One-Piece Bonded Windshield
- Mud Flaps
- Single-Motor Windshield Wipers w/Wet Arm
- Underhood Utility Light

SAFETY/CONVENIENCE (EXTERIOR)

- 20' Sewer Hose
- 4-Wheel ABS Brakes
- Automatic Hydraulic Leveling Jacks
- Automotive Safety Glass
- Daytime Running Lights
- Easy Sweep Flooring at Entry Step
- Entry Door w/Screen Door & Deadbolt Lock
- Four 6V/Deep-Cycle House Batteries
- Lighted Entry Assist Handle
- Power Entry Step
- Rear, Front and Side Marker Lights (Select LED)
- Solid-Surface Entry-Step w/LED Accent Lights
- Toilet Tank San-T-Flush™ System
- Touch Sensor Tank Monitoring System
- Utility Compartment w/Exterior Shower

STORAGE

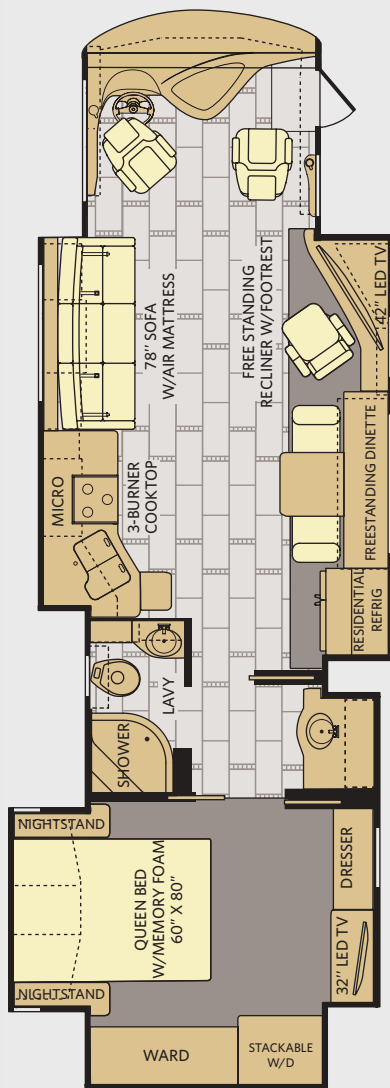
- Continuous One-Piece Compartment Seals
- Lighted Compartments
- Pass-Through Storage

BODY STRUCTURE

- Basement Storage
- Heated Water & Holding Tank Compartments
- Power Bridge® Chassis Construction
- Powerframes™ Precision, Welded Aluminum Interlocking Frames
- Quiet Cool Ducted A/C
- Radiused & Cambered Entry Door
- Raised Space Frame Foundation
- Solid Bead-Foam Engineered Fit Insulation™
- Vacu-Bond™ Integrated Walls
- Powerlock System™ (Interlocking Floors, Walls, & Ceiling)

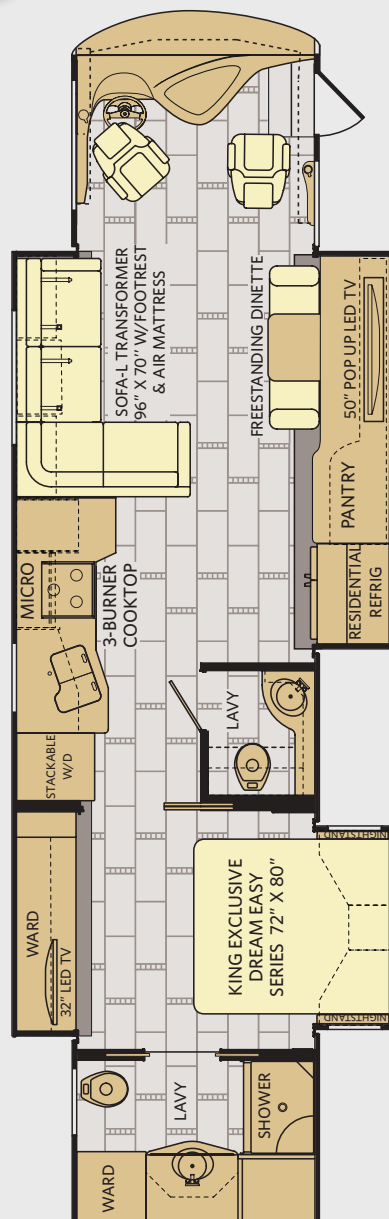
Not all options are available on all floor plans. See your Fleetwood dealer for details.
**CSA standards may require substitution or deletion to achieve conformance.

Discovery Floor Plans



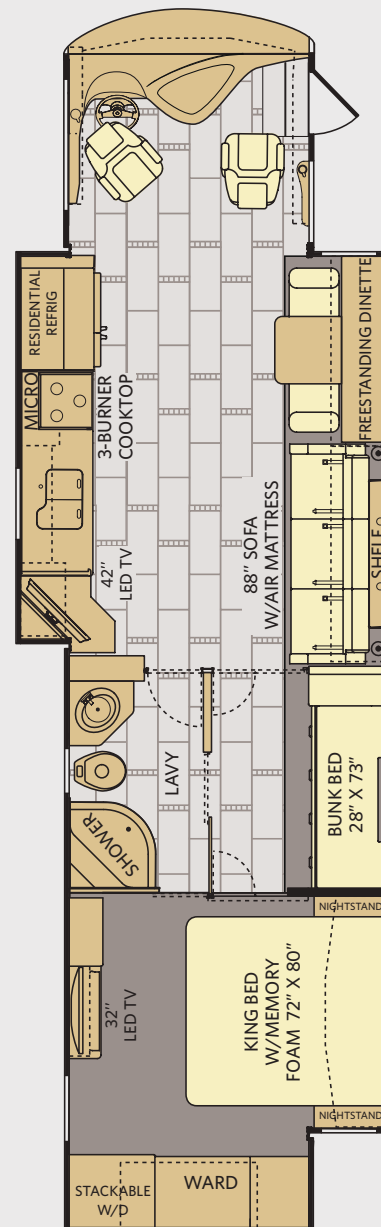
37R

Available options: 087, 107, 113, 139, 191, 830,
854, 883



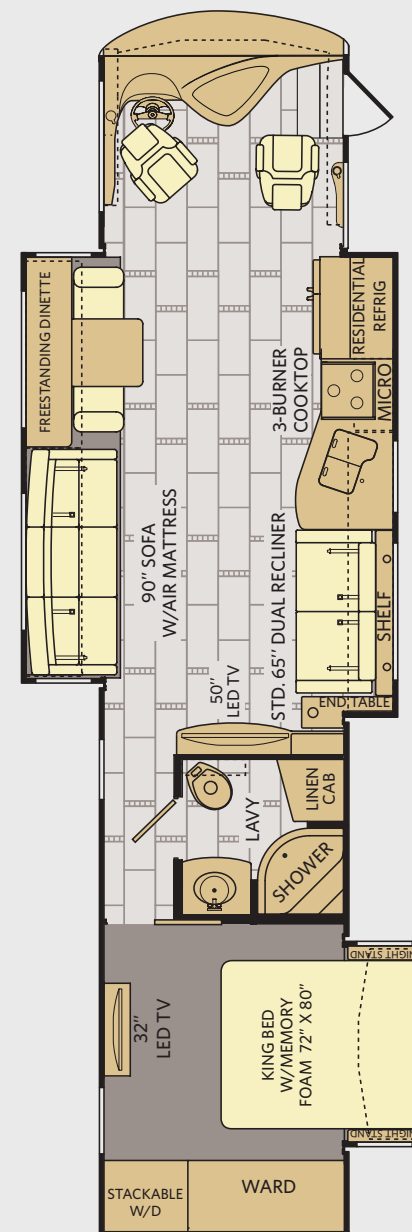
40E

Available options: 087, 107, 113



40G

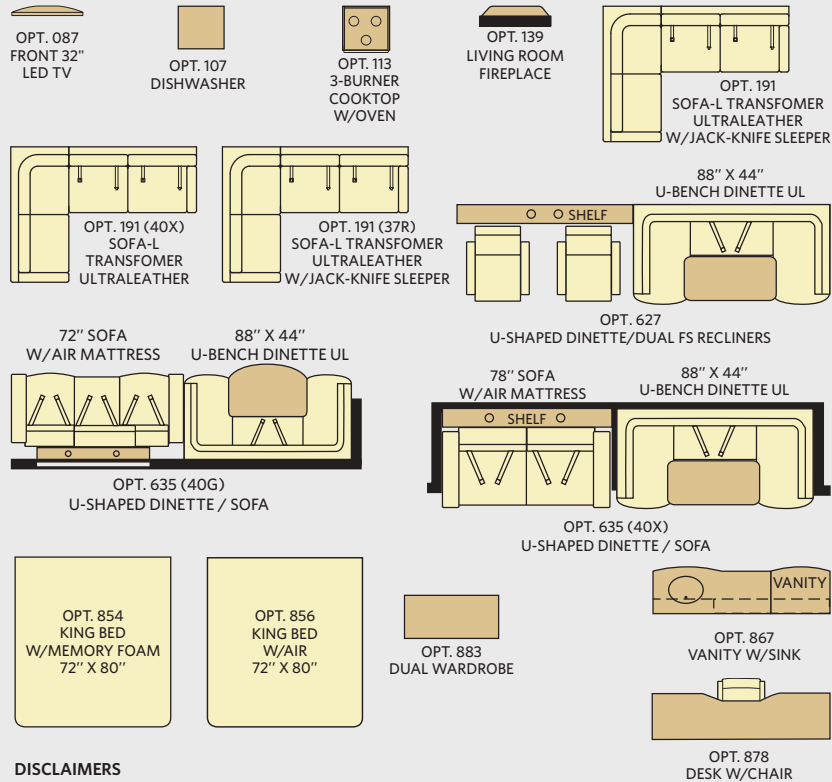
Available options: 087, 107, 113, 635, 830,
856, 867, 878



40X

Available options: 087, 107, 113, 191, 627, 635,
830, 856

FLOOR PLAN OPTIONS



DISCLAIMERS

- GVWR (Gross Vehicle Weight Rating) is the maximum permissible weight of this fully loaded motor home. The GVWR is equal to or greater than the sum of the (UVW) unloaded vehicle weight plus the (OCCC) occupant cargo-carrying capacity.*
 - GAWR (Gross Axle Weight Rating) is the maximum permissible loaded weight a specific axle is designed to carry.
 - GCWR (Gross Combined Weight Rating) is the value specified by the motor home manufacturer as the maximum allowable loaded weight of this motor home with its towed vehicle. Towing and braking capacities may be different. Refer to Fleetwood and chassis manufacturer's manuals for complete information.
 - Length measured from front bumper to rear bumper (excludes accessories).
 - Excludes safety equipment and awnings.
 - Motor homes feature a body width over 96" which will restrict your access to certain roads. Before purchasing, you should research any state and/or province road laws which may affect your usage.
 - Tank manufacturer's listed water capacity (WC). Actual propane capacity is 80% of water listing as required by the safety code.
- † The chassis manufacturer recommends the installation of a supplemental brake control system to activate the brakes on the vehicle or trailer you are towing. Hitch receiver ratings expressed are maximum for the hitch receiver installed and may require the purchase of additional equipment that is dependent on the weight of the towed load. Consult with hitch receiver manufacturer for further information.

* UVW and OCCC are found on the label containing the federal certification tag in each RV.

CHASSIS

POWER BRIDGE®

MODELS	37R	40E	40G	40X
Wheelbase (inches)	244"	276"	276"	276"
GVWR (lbs) ¹	33,400	33,400	33,400	33,400
Front GAWR (lbs) ²	12,400	12,400	12,400	12,400
Rear GAWR (lbs) ²	21,000	21,000	21,000	21,000
GCWR (lbs) ³	43,400	43,400	43,400	43,400
Hitch Rating Weight (lbs) [†]	10,000	10,000	10,000	10,000
Tongue Weight (lbs)*	1,000	1,000	1,000	1,000
Fuel Capacity (gal)	100	100	100	100

POWER BRIDGE® CHASSIS

Model: Freightliner® XCS Series

Engine: Cummins® ISL9

Transmission: Allison® 3000 MH 6-Speed
w/Electronic Shifter

Alternator: Delco Remy 160 Amp

Torque: 1,150 lb-ft @ 1,400 RPM

Horsepower: 380HP

DIMENSIONS & CAPACITIES

MODELS	37R	40E	40G	40X
Overall Length (inches) ⁴	38' 8"	41' 4"	41' 4"	41' 4"
Overall Height (with A/C)	12' 10"	12' 10"	12' 10"	12' 10"
Overall Width (maximum) ^{5, 6}	102"	102"	102"	102"
Interior Height (maximum)	84"	84"	84"	84"
Interior Width (maximum)	96"	96"	96"	96"
Patio Awning Width	14'	13'	19' 6"	14' 6"
Interior Storage (cu. ft.)	163	197	166	197
Exterior Storage (cu. ft.)	126	208	208	208
Fresh Water Holding Tank (gal)	100	100	100	100
Grey Water Holding Tank (gal)	75	75	75	75
Black Water Holding Tank (gal)	50	50	50	50
Appliance Propane Tank (gal) (WC) ⁷	38.7	38.7	38.7	38.7
Water Heater Tank (gal)	10	10	10	10



WHY FLEETWOOD?



Quality

There's no cutting corners. Skilled craftsmen build every Fleetwood RV for maximum durability and longevity.



Trust

More people trust Fleetwood RV. After all, we've spent over 60 years perfecting motorhomes, earning the loyalty of generations of RVers.



Passion

We're truly passionate about the RV lifestyle. Fleetwood RV was founded by RV enthusiasts, and that tradition continues today.



Safety

You've got precious cargo. So we've engineered dozens of innovative safety features into our motorhomes to give you more peace of mind.



Service

Help is nearby with 24/7 emergency Fleetwood RV Trusted Roadside Assistance*. And when you need an upgrade or repair, you'll find Fleetwood RV dealers all across North America ready to assist you.



Warranty

Exclusive RV OwnerCare** warranty.
See your Fleetwood RV dealer for details.

*All 2016 Fleetwood RV Motorhomes include a 1-year emergency roadside assistance membership. For complete info, see your Fleetwood RV dealer.

ALLIED RECREATION GROUP.



Visit FleetwoodRV.com.



RV OWNERCARE**

Limited one-year/15,000-mile coach warranty and three-year/45,000-mile structural warranty, whichever occurs first, and it is fully transferable for the first 12 months. RV OWNERCARE is one of the RV industry's most comprehensive programs and includes systems, appliances, components and construction, with no deductible and no service charge. RV OWNERCARE coverage is provided by a company that will be around in the future to service your needs. See your nearest Fleetwood RV dealer for a full explanation of benefits and restrictions.

FLEETWOOD MOTORHOME ASSOCIATION

As a Fleetwood RV owner, you're invited to become a member of the Fleetwood Motorhome Association (FMA). Becoming a member is the perfect way to meet other Fleetwood owners who love to travel across America and share in the RV lifestyle. Visit the FMA website at www.fma4fun.org to learn more and join the fun.

CONTACT US

To locate a dealer near you, visit our website at www.fleetwoodrv.com or call 1-800-322-8216. We can also be contacted at Fleetwood RV Customer Relations, P.O. Box 1007, Decatur, IN 46733.

IMPORTANT—PLEASE READ: Product information, photography and illustrations included in this publication were as accurate as possible at the time of printing. For further product information and changes, please visit our website at www.fleetwoodrv.com or contact your local Fleetwood RV dealer. Prices, materials, design and specifications are subject to change without notice. All weights, fuel, liquid capacities and dimensions are approximate. Fleetwood RV has designed its recreational vehicles to provide a variety of uses for its customers. Each vehicle features optimal seating, sleeping, storage and fluid capacities. The user is responsible for selecting the proper combination of loads (i.e., occupants, equipment, fluids, cargo, etc.) to ensure that the vehicle's capacities are not exceeded.

YOUR LOCAL FLEETWOOD RV DEALER IS:

